

A panoramic view of the Brentonico Plateau, showing rolling green hills, a winding road, and a small village in the valley. A mountain biker is visible in the foreground on the right, standing on a rocky outcrop with their bike. The sky is blue with scattered white clouds.

Brentonico Plateau

**“The Garden of Italy”
in the heart of
Monte Baldo
Natural Park**



Find out more!



Trentino has an amazing variety of natural environments and climates, which can reserve a range of very different holiday opportunities, all waiting to be discovered. One of the destinations in this precious kaleidoscope that presents unique features is the Brentonico Plateau, the green heart of the Monte Baldo Local Natural Park, a protected area in Trentino and bearer of a Legambiente Green Flag.

Using the extensive network of forest roads and paths, some of which overlook Lake Garda, Italy's largest lake, you can admire views of rare beauty without having to negotiate great differences in height, or set out in pursuit of traces of the past by passing through the sites of the Great War, such as trenches, tunnels and fortifications. Last but not least, don't miss a stop in one of the many mountain huts, or malghe, where the milk from the mountain pastures is processed. The flowering period is ideal to discover the rare vegetation that embellishes the Brentonico Plateau, studied by botanists from all over the world. Summer is the right time to enjoy the zero-kilometre cuisine, with delicious, genuine products: wild herbs, honey, and cheeses, not to mention the chestnuts of Castione that light up autumn on the plateau with wholesome flavour. Monte Baldo is also the first mountain you come across when arriving in Trentino from the south, which makes it easy to reach from the Rovereto Sud exit of the A22 motorway.

A colourful summer

The Brentonico Plateau is a lively area that can offer you many opportunities. In the warmer season, you can discover nature by trekking, mountain biking, or horse riding. You can also take the shuttle bus, which sets off from Brentonico to some of the main starting points for scenic guided excursions in the Monte Baldo Natural Park. The village of Brentonico can also be the perfect place for a relaxing day, spent visiting the Fossil Museum, the Botanical Garden and the 10th century crypt of San Giovanni, the remains of the oldest medieval church in Trentino.





While in winter...

When the Plateau dresses up in white, it is time to head for the Palsa, San Valentino and San Giacomo ski area, which offers large, sunny, panoramic slopes, modern ski lifts and a state-of-the-art snowmaking system. Those venturing onto the snow for the first time can count on the guidance of ski school camps and ski instructors. In winter, the area also offers many opportunities for sledging, ice skating and, of course, snowshoeing, with many different trails available. In the refuges you can taste the delicacies of Trentino cuisine.



Monte Baldo Local Natural Park





Such a unique ecosystem must be protected with the utmost care and attention. This is why, in 2008, the Brentonico Network of Reserves was established, in 2013 becoming what is known today as the Monte Baldo Local Natural Park. This place has been known to naturalists, apothecaries and pharmacists since the 15th century, as rare flowers and preglacial plants can also be found here. For centuries it was called the “Garden of Italy”, and today it can also boast ownership of the Legambiente Green Flag. Many trails pass through it, so all you have to do is choose one and walk, mountain bike or ride it on horseback, perhaps taking advantage of the guided excursions and workshops offered to help you better understand the richness of this habitat.

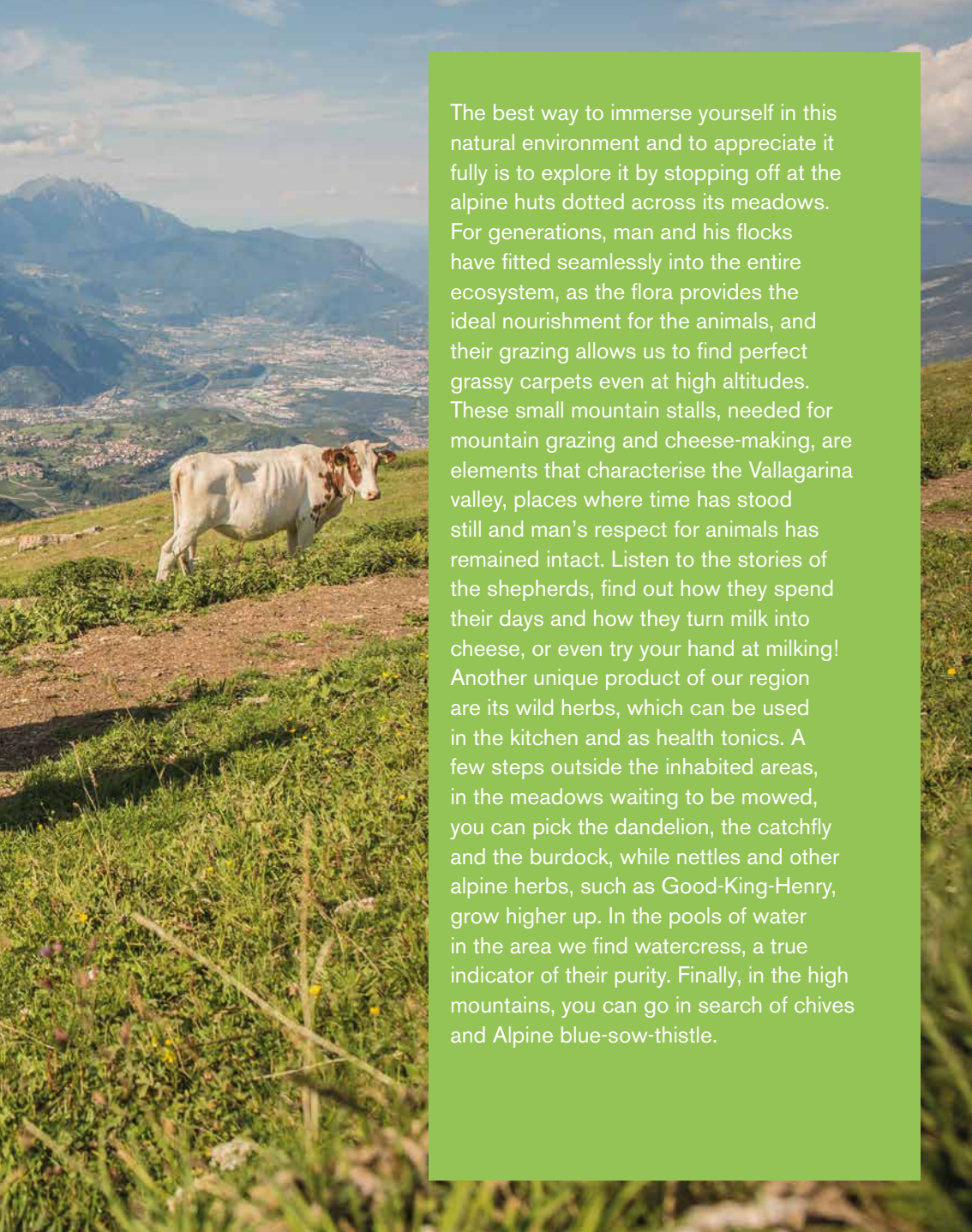
The best seasons during which to immerse yourself in the park are spring and autumn, when the range of colours offered by the local flora is at its best, first thanks to the spectacular flowering, enhanced by the colours of arnica, lilies, gentians, orchids, globeflowers and silvery crane’s bills, and then, as the days begin to get shorter, thanks to the shades of gold, orange and red donned by the foliage of the trees.



Find out more!

From alpine pastures to meadows





The best way to immerse yourself in this natural environment and to appreciate it fully is to explore it by stopping off at the alpine huts dotted across its meadows. For generations, man and his flocks have fitted seamlessly into the entire ecosystem, as the flora provides the ideal nourishment for the animals, and their grazing allows us to find perfect grassy carpets even at high altitudes. These small mountain stalls, needed for mountain grazing and cheese-making, are elements that characterise the Vallagarina valley, places where time has stood still and man's respect for animals has remained intact. Listen to the stories of the shepherds, find out how they spend their days and how they turn milk into cheese, or even try your hand at milking! Another unique product of our region are its wild herbs, which can be used in the kitchen and as health tonics. A few steps outside the inhabited areas, in the meadows waiting to be mowed, you can pick the dandelion, the catchfly and the burdock, while nettles and other alpine herbs, such as Good-King-Henry, grow higher up. In the pools of water in the area we find watercress, a true indicator of their purity. Finally, in the high mountains, you can go in search of chives and Alpine blue-sow-thistle.

Trails through the Baldo pastures



Hike to the Val del Parol

Orchids, lilies and gentians in the wildest part of Monte Baldo

Departure point Graziani refuge

Arrival point Malga Campeì Refuge

Itinerary Dirt road 650 to Malga Campo, trail 622 to Bocca Paltrane, descent to Val del Parol as far as Malga Campeì. Return by trail 650.

Length 10.5 km

Duration 4h 30 mins

Elevation gain 529 m

Useful information Between Malga Campo and the "Penege", before Val del Parol, there is a small section of exposed path, so be extra careful with children.



Walk through the pastures of Malga Susine

Visit to the educational farm of Malga Susine

Departure point Piazza di Polsa

Arrival Point Malga Susine

Itinerary After 300 metres heading slightly downhill, follow the signs, after a stretch of woodland you come out on a dirt road which leads to Malga Susine.

Length 1 km

Duration 30 mins

Elevation gain 70 m

Useful information Unpaved route also suitable for trekking buggies (large wheels).



Mortigola - San Giacomo ring trail

A pleasant circular route starting and ending in San Giacomo

Departure point San Giacomo - small chapel

Arrival point Malga Mortigola

Itinerary Initially follow the direction of SAT trail 622, then follow signs for Malga Mortigola.

Length 4.2 km

Duration 1h 25 mins round trip

Elevation gain 228 m



Ring trail from Villaggio San Valentino

Striking hike through pastures and unmissable scenery on Lake Garda

Departure point Villaggio San Valentino

Arrival point Bocca di Navene

Itinerary Trail 650 "delle vipere", Malga Bes, Bocca del Creer, trail 653 via Malga Tolghe, Bocca di Navene until you cross the stream at the bottom of the valley. Close the ring with trail 654.

Length 10.9 km

Duration 4h 45 mins

Elevation gain 480 m

Useful information A section of the 650 "viper" trail is an equipped trail, not suitable for small children or those suffering from vertigo.



From Festa to the Baldo pastures

Ring trail to explore the traditional pastures (malghe) of Monte Baldo

Departure point Festa

Arrival point Malga Campo

Itinerary Trail 650 and 624 to Malga Campeï di Sopra, 624bis, 650 to Malga Campo, to close the ring trail 622, and then dirt road to Festa.

Length 11.1 km

Duration 5h 20 mins

Elevation gain 813 m

Itineraries for trained walkers



Monte Altissimo

The highest peak of Monte Baldo Trentino, with an extraordinary view of Lake Garda, Adamello and the Brenta Dolomites

High mountain

Departure and arrival

point Graziani refuge
Itinerary Outward stretch from trail 633, return stretch from path 622 to Malga Campo and then 650 to the Graziani Refuge.

Length 3.9 km

Duration 1h 48 mins

Elevation gain 437 m

Useful information

Itinerary entirely exposed to the sun. In summer, bring a hat and wear sunscreen.



Terre Verdi

Walk through the beech woods to discover the mineral that made Brentonico famous

High mountain

Departure and arrival

point Villaggio Pianetti, San Valentino, Military Cemetery
Itinerary Villaggio Pianetti, military cemetery, Malga Pianetti, Terre Verdi, trail 654 to Fos-ce Refuge, Strada Graziani (SP3), Villaggio San Valentino.

Length 8 km

Duration 3h 17 mins

Elevation gain 327 m



San Valentino ring trail

A pleasant walk through the meadows and beech forests of the Brentonico Plateau

High mountain

Departure and arrival

point Passo San Valentino
Itinerary San Valentino Military Cemetery, mule track 654, Malga Pianetti, provincial road 208m Malga Postemonzel, Passo San Valentino.

Length 5.4 km

Duration 1h 45 mins

Elevation gain 178 m

Useful information Within the forest and in the vast meadows, try to stay quiet so that you have the opportunity to meet some of the local fauna, such as squirrels, woodpeckers, hares and roe deer.



The Ventrar trail

Walking suspended over Lake Garda

High mountain

arrival point Car Park at Zocchi Alti, above Bocca di Navene

Itinerary Zocchi Alti, Ventrar trail, Malcesine Monte Baldo cable car, return by the same route.

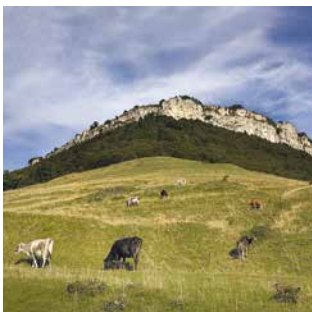
Length 5.4 km

Duration 2h 40 mins

Elevation gain 440 m

Useful information

Itinerary with short exposed sections, requires minimum physical training, not suitable for young children or people suffering from vertigo.



Bes Botanical Reserve - Corna Piana

Unique blooms in the Monte Baldo Park

High mountain

Departure and arrival point Passo San Valentino
Arrival point Graziani refuge

Itinerary Strada Graziani SP3, forest road to Malga Bes, trails 650 and 633 to Bocca del Creer, in front of the Graziani Refuge, climb to Corna Piana with the natural steps, return via Malga Bes and Passo San Valentino.

Length 5.5 km

Duration 4h 39 mins

Elevation gain 427 m

Useful information

The first section of the trail (Sentiero delle Vipere) is not suitable for people suffering from vertigo or very young children, as it is very exposed in places.



Bocca d'Ardole - Corno della Paura - Monte Vignola

The Peace Trail on Monte Baldo Trentino

High mountain

Departure and arrival point Camping Polsa

Itinerary Camping Polsa, Malga Susine, Bocca d'Ardole, Corno della Paura, Monte Vignola, Camping Polsa.

Length 8.5 km

Duration 3h 33 mins

Elevation gain 437 m

Useful information The trail is entirely exposed to the sun, so we recommend that you bring cool drinks, a hat and wear sunscreen.





Colonei Tour

**A ring trail in the
Madonna della Neve
basin**

High mountain

**Departure and arrival
point** Madonna della Neve

Itinerary Trail 653, Valle del Rii, Passo della Cola, SP230 dei Dossioli, and as far as the fork that takes you back down to Madonna della Neve.

Length 9.8 km

Duration 3h 35 mins

Elevation gain 353 m

Useful information

The route does not present any particular dangerous points. However, we recommend that you watch out for wet wood when crossing the footbridge over the stream in the Rii valley.



GeoTrail Baldo Gems

**Nature treasure hunt in
Madonna della Neve**

High mountain

Departure point

Monte Baldo

Arrival point

Passo del Cerbiolo

Itinerary Monte Baldo Refuge, Pian della Cenere, Passo Cerbiolo, Pian della Cenere, Monte Baldo Refuge.

Length 8.5 km

Duration 3h 03 mins

Elevation gain 426 m



San Giacomo - Malga Campo - Bocca Creer - San Giacomo

High mountain

**Departure and arrival
point**

San Giacomo

Itinerary Trail 622 to Malga Campo, trail 650 to Bocca del Creer, trail 633 to San Giacomo.

Length 7.7 km

Duration 3h 35 mins

Elevation gain 483 m





Excursion to the Sorna gorge

Hidden mines and canyons

Low mountain

Departure and arrival point

Church of Corné

Itinerary From the church, descend through the countryside until reaching the signposts on the right for the Sentiero della Sorna - Pont del Diaol, then return along the same route.

Length 1.6 km

Duration 2 hours

Elevation gain 53 m

Useful information Along the way, you will come across an iron bridge and equipped ladders, which can be very slippery in wet weather or after rainfall. In such cases, we advise you to be very careful and, if necessary, to interrupt your journey and turn back.



Brentonico - Cazzano ring trail

Walk through the vineyards and terracing around Brentonico

Low mountain

Low mountain

Departure and arrival point

Historic centre of Brentonico
Itinerary "Al Zengio" sports centre, cemetery, after the countryside, follow the signs for Cazzano, Via Alcide Degasperi, at the small grassy area on the left take the uphill road alongside a stream to Brentonico.

Length 4.2 km

Duration 1h 20 mins

Elevation gain 178 m



Castione - Brentonico ring trail

Discovering ancient chestnut groves and the remains of the Great War

Low mountain

Departure and arrival point

Castione

Itinerary Chapel of San Rocco, Monte Giovo, Brentonico, Campo Sportivo Santa Caterina, MTB trail 1941 to Castione.

Length 7.6 km

Duration 2h 20 mins

Elevation gain 258 m



Saccone ring trail

Ring trail around

Saccone

Low mountain

Departure and arrival point

Saccone

Itinerary Saccone Church, Via 24 Maggio, Via Furlani, Pozza area, Saccone.

Length 8.7 km

Duration 3 hours

Elevation gain 426 m

Mountain for everyone: family trekking



From Graziani Refuge to Malga Campo

Half-way up through
the meadows
of Monte Altissimo

High mountain Departure and arrival point

Graziani refuge
Itinerary take Trail 650
both ways.
Length 2.5 km
Duration 50 mins
Elevation gain 181 m
Useful information

Easy route suitable for small
children and also for trekking
buggies with large wheels.
Sunny itinerary.



From Madonna della Neve to the Corondoler waterfall

An enchanting, family-
friendly ring trail

High mountain Departure point

Monte
Baldo

Arrival point Corondoler
waterfall

Itinerary Trail 652, follow
the path of the concrete-
covered gully, until you reach
the waterfalls.

Length 6 km
Duration 2h 30 mins
Elevation gain 161 m
Useful information

This trail can also be hiked
with a trekking buggy,
bearing in mind that it may
be necessary to lift it off the
ground to overcome certain
obstacles, such as bars and
gates.



Talpina in a buggy

Easy walk through
the vineyards and the
sunny meadows behind
Crosano

Low mountain Departure and arrival point

Crosano square

Itinerary Crosano Church,
cemetery, keep to the right at
the cross, descend through
the countryside and climb
back up towards the village.

Length 2.5 km
Duration 50 mins
Elevation gain 87 m
Useful information

Walk on asphalt/gravel road
also suitable for buggies. This
route is entirely exposed to the
sun, so it is advisable to bring
some water and wear a hat.





Historic centre of Brentonico in a buggy

A simple walk around the historic centre of Brentonico

Low mountain

Departure and arrival point Brentonico Church
Itinerary Brentonico Church, "Al Zengio" sports

centre Via "Al Rocol" to the old building with turret, stream, uphill back to the village.

Length 1.3 km

Duration 24 mins

Elevation gain 41 m

Useful information

Walk on asphalt road also suitable for buggies, preferably of the trekking variety with large wheels.



Brentonico in a buggy - Castel Dosso Maggiore

Easy walk around the Brentonico sports centre with views over Vallagarina

Low mountain

Departure and arrival point Campo Sportivo Santa Caterina in Brentonico

Length 1.8 km

Duration 31 mins

Elevation gain 48 m

Useful information

A walk along an asphalt road that later becomes unpaved. Suitable for trekking buggies with large wheels.



Don't miss the Adventure Park. Fun is guaranteed!



The chestnut trail from Brentonico to Castione

Simple walk through ancient chestnut groves

Low mountain

Departure point

Campo Sportivo Santa Caterina di Brentonico

Arrival point Castione

Length 1.8 km

Duration 35 mins

Elevation gain 200 m

Useful information

Walk on a farm road, also doable with a trekking buggy with large wheels.



A scenic view of a mountain valley. In the foreground, there is a grassy slope with some rocks and a wire fence. The middle ground shows a lush green valley with a winding river and a small town. The background features rolling green mountains under a clear blue sky.

Brentonico Plateau Monte Baldo Bike-friendly area



One of the most effective ways for you to explore the Monte Baldo Natural Park is to cycle through it: not only because you can move around quickly without making much noise, thus avoiding disturbing the fauna, but also because the area is criss-crossed by specially designed routes, equipped with bicycle racks, ebike recharging stations, rental points and accommodation facilities equipped to welcome bikers.

If you don't know the area, you can rely on organised guided tours at lower altitudes or with greater elevation gains, over shorter distances or longer routes, such as the Brentonico Ring, 33 kilometres of pure fun.



Find out more!



Electric charging columns for e-bikes

- San Valentino Pass, in front of the Baïta del Tret
- Palsa, in Piazza Palsa

Dedicated services for cyclists in bike-friendly facilities

- secure storage
- laundry service
- small bike service area
- bike washing
- info corner
- cyclist's breakfast with dried fruit and cereals
- discounts on vehicle hire, guided tours

At our offices you can find out which establishments offer these services.

Guided bike and e-bike tours

A tour on an electric or a traditional bike is a perfect idea to discover the beauties of Brentonico and Monte Baldo accompanied by an expert guide. Discover the tour that suits you!

Bike routes



Brentonico Ring | 1940

A very satisfying ride through forests, alpine pastures and splendid views with the possibility to choose from a number of variants

Departure and arrival point Brentonico

Length 33.6 km

Duration 6h 09 mins

Itinerary From Brentonico you pass through Saccone, Palsa, Colme del Vignola, Corno della Paura, Passo San Valentino, San Giacomo, Mortigola area, Festa, Brentonico.



Prà Alpesina - S. Valentino | 1950

Itinerary through the hidden valleys above Lake Prà da Stua

Departure point Malga Dossioli

Arrival point Village Pianetti, San Valentino

Length 7.4 km

Duration 2h 20 mins

Itinerary From Malga Dossioli follow trail no. 1495 until it fords the stream. Walk up the side of the riverbed to the fork on the right leading to the Villaggio S. Valentino.





Polsa - Vignola family bike trail

Route on a dirt road from Polsa to Monte Vignola, suitable for families and children

Departure and arrival point Camping Polsa

Length 7.3 km

Duration 1h 23 mins

Itinerary From the car park, follow the unpaved road in the direction of Monte Vignola, continue to Bocca d'Ardole, descend to Malga Susine, and return to the starting point.



Ascent to Monte Altissimo | 767

Iconic ascent along the military road built in 1915 to one of the most spectacular viewpoints in the Alps

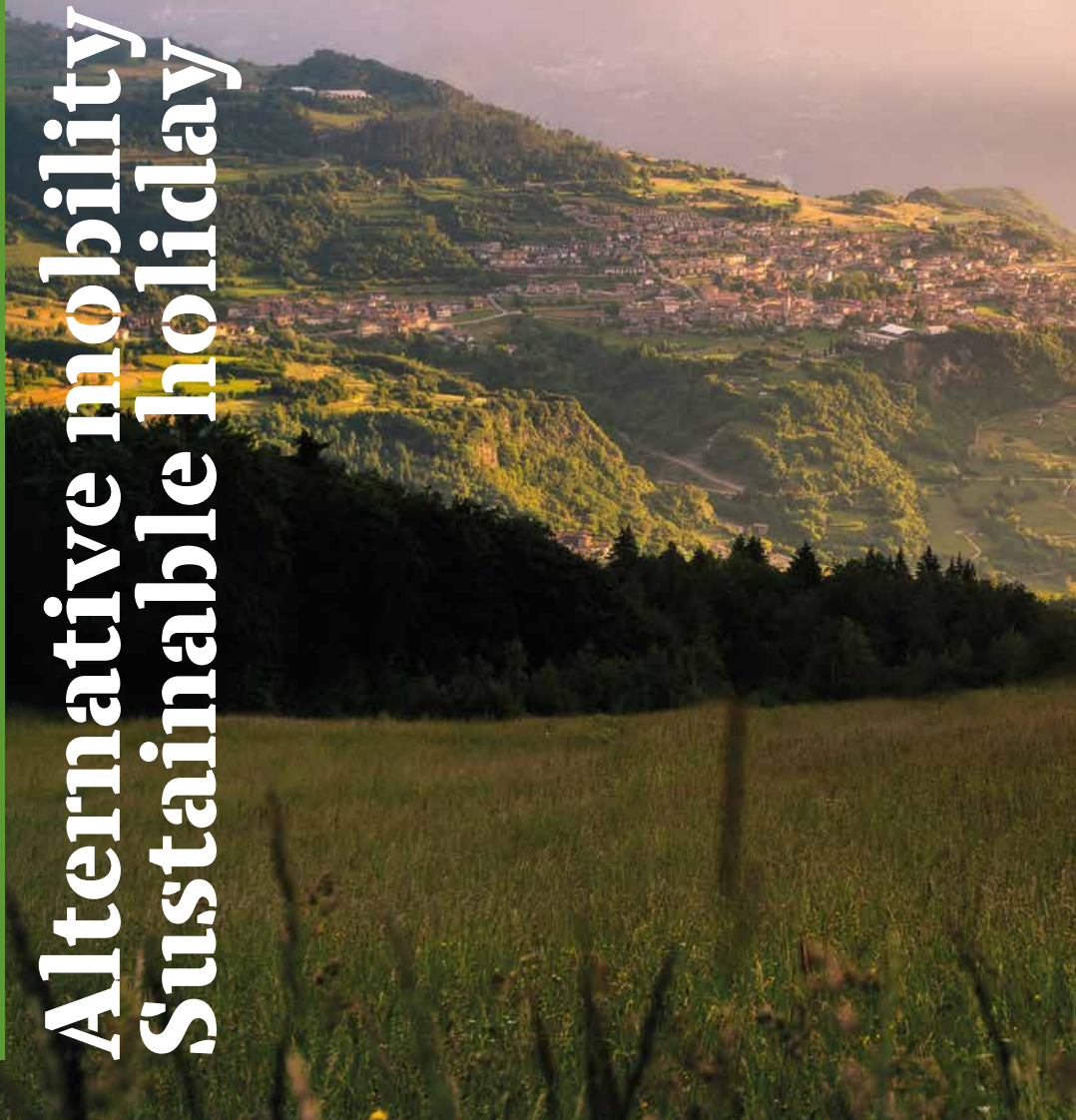
Departure and arrival point Bocca del Creer

Length 4.1 km

Duration 1h 24 mins

Itinerary From the starting point, the dirt road makes a hairpin bend behind the Graziani refuge and shortly afterwards, at the first fork, climbs more steeply to the left. The route is marked with the number MTB 767.

Alternative mobility Sustainable holiday



Malcesine- Monte Baldo cable car and Prà Alpesina chairlift

Along the road linking the Graziani Refuge to Avio, the Prà Alpesina chairlift takes you to the top of Baldo in about ten minutes:

a short panoramic walk will take you to the Malcesine - Monte Baldo cable car station.

Climb into the rotating cabin and “fly” in a few minutes from 1,800 m to Lake Garda.

Best bird’s-eye view guaranteed!



Find out more!

Brentonico





The village of Brentonico also deserves special attention, with its sites of great historical, educational and artistic importance, starting with Palazzo Eccheli Baisi, a country residence built at the end of the 16th century. Today it is home to the Fossil Museum, the Botanical Garden and the Natural Park House.

The museum houses about a thousand artefacts collected on the northern side of Monte Baldo, forming a collection that ranges from the casts of the protozoa, the first colonisers of our planet, to those of the crustaceans. The Botanical Garden stretches out in front of the building and is divided into two areas, one organised in the Renaissance manner and one in which the indigenous natural landscape is reproduced.

In Brentonico don't miss a visit to the oldest medieval church in Trentino, the crypt of San Giovanni, all that remains of the ancient place of worship on which the current one was built between 1584 and 1593, consecrated to SS. Peter and Paul. The 10th-century crypt has a quadrangular plan, divided into three naves by quadrangular columns, from which the slender cross vaults rise. The altar and some medieval and Romanesque frescoes are of great interest.

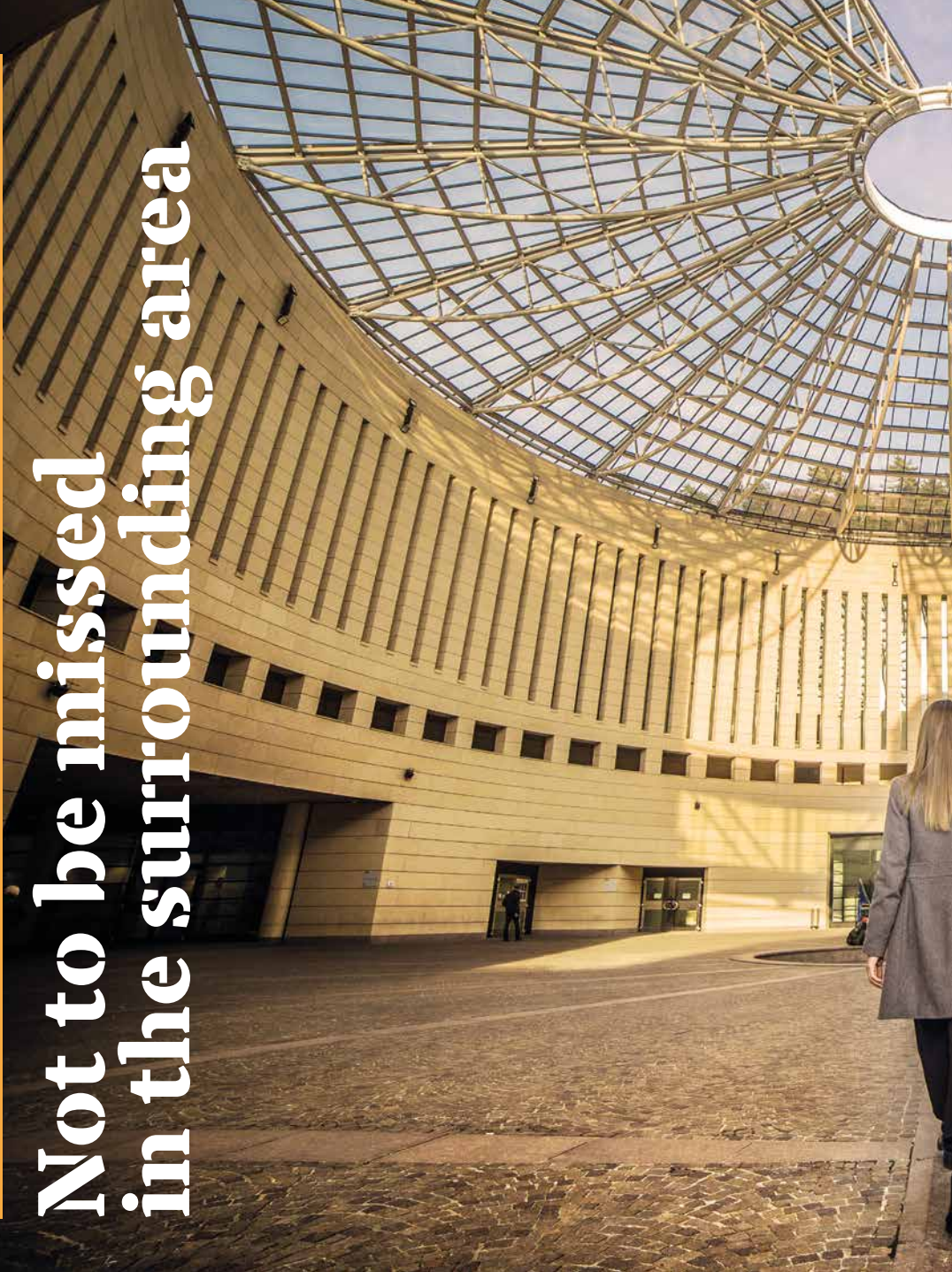
The church is a fine example of Castione's marble art, already recorded in the 12th century. The interior has a single nave and contains some interesting works of art; the monumental bell tower has Romanesque mullioned windows with a Veronese terracotta spire.

Finally, remember that in Some di Brentonico there is an ancient 'Vitruvian' water mill, with millstones. The Zeni Mill is still in perfect working order and it is one of the few remaining mills of the thousand operating in Trentino until electricity was introduced. Why not go and see it up close?



Find out more!

**Not to be missed
in the surrounding area**





Another good reason to spend a few days' holiday on the Brentonico Plateau is its proximity to the town of Rovereto, which has much to offer in terms of history, art and culture. You can visit its medieval remains, the palaces left over from the long Venetian domination, those of the eighteenth century, the rooms of the Castle that tell the story of what the Great War represented for Trentino, the Mart, Museum of Modern and Contemporary Art of Trento and Rovereto. With the Trentino Guest Card you can also take advantage of discounts and reductions on admission and public transport.

And all around is the Vallagarina, with its castles, villages and countryside where quality wine-growing is king.



Find out more!

Mountain flavours





The Vallagarina area offers you many unique flavours resulting from the work of nature and those who work the land: farmers and breeders, those who transform the raw materials into food and, finally, of the chefs who offer them on their restaurant tables, inspired by a tradition that has soaked up many different contaminations. There are many “musts” in Vallagarina and, focusing on the specific features of the Brentonico Plateau, the first to be mentioned are the aromatic herbs and spices that can add an extra touch to our dishes, such as Baldo saffron, which is made from the flowers of the *Crocus Sativus*. Particularly tasty are the cheeses, first and foremost Monte Baldo and Monte Baldo Primo Fiore, produced in the local shepherd’s huts and matured from 7 months to 4 years.


Another characteristic product of the plateau is the Castione chestnuts, produced by around 2,500 plants, bearing large, sweet-tasting fruits. A festival is held in their honour every year. The list of delicacies also includes fruit juices and syrups made with raspberries, elderberries, blueberries or sour cherries, which offer intense and authentic flavours, as well as craft beers, the result of the creativity of local brewers, who skilfully combine brewing and wine-making techniques. Other traditional ingredients linked to the territory include cured meats such as speck, luganega and carne salada, honey, which benefits from the many species of flowers available to bees in an area so rich in biodiversity, flour, trout bred in the clear waters that flow from the glaciers, wines, meats, fruit and vegetables.



Discover
Monte Baldo
flavours!

In winter





Even if in winter nature rests and hides its colours, its scents and the life that teems within it, the Brentonico Plateau never ceases to be hospitable, offering sportsmen and women and those who love the outdoors a host of opportunities. The Palsa, San Valentino, San Giacomo ski area has modern infrastructures for skiing, sledging and ice skating, as well as being an ideal destination for those who love walking with snowshoes on their feet. Mountain refuge cuisine and a winter playground for children complete an ideal offer for families. As for downhill skiing and snowboarding, wide, sunny, panoramic pistes, modern lifts and a state-of-the-art snowmaking system provide even the most demanding skiers with ideal conditions for fun, while beginners can learn to glide on the snow in school camps, supervised by instructors. All this just a few kilometres from the A22 Rovereto Sud motorway exit.



Find out more!

Routes with snowshoes



San Giacomo tourist route Trail no. 1

Difficulty medium

Departure and arrival point San Giacomo

Length 3.3 km

Duration 1h 23 mins

Elevation gain 182 m



Bucaneve tourist route Trail No. 4

Difficulty easy

Departure and arrival San Valentino,
Mosee area

Length 1.1 km

Duration 26 mins

Elevation gain 74 m



Mortigola tourist route Trail no. 2

Difficulty easy

Departure and arrival point San Giacomo

Length 1.9 km

Duration 56 mins

Elevation gain 166 m



Zestarei tourist route Trail no. 6

Difficulty medium

Departure and arrival point Camping Polsa

Length 5 km

Duration 1h 45 mins

Elevation gain 141 m



Mortigola - San Giacomo ring trail

Difficulty easy

Departure and arrival point Malga Mortigola

Length 4.1 km

Duration 1h 45 mins

Elevation gain 198 m



Passo San Valentino ring trail

Difficulty easy

Departure and arrival Passo San Valentino

Length 5.4 km

Duration 2h 05 mins

Elevation gain 179 m



Mosee - Baita Costapelada

Difficulty easy

Departure and arrival San Valentino,
Mosee area

Length 1.5 km

Duration 1h 50 mins

Elevation gain 168 m



Polsa - Colme di Vignola - Montagnola - Polsa

Difficulty easy

Departure and arrival point Camping Polsa

Length 5.7 km

Duration 2h 25 mins

Elevation gain 286 m

VENEZIA

VICENZA

VERONA

A22

USCITA



vignola 1582 m

monte cerbiolo 1559 m

postemon 1545 m

USCITA



POLSA
45°46'51.94"N
10°56'28.30"E

BRENTONICO

Impianti:

- 1 Montagnola/seggiovia 4p
- 2 Rosa del sole /seggiovia 4p
- 3 Momo/skillift
- 4 Ancora/skillift
- 5 Bucaneve/ seggiovia 4p
- CS Campo Scuola
- CS-6 Tapis Roulant Polsa
- CS-7 Tapis Roulant S.Valentino
- CS-8 Tapis Roulant Passo

Piste:

- 9 Polsa
- 10 Variante polsa 1
- 11 Bellavista
- 12 Montagnola
- 13 Malga susine
- 14 Meribel
- 15 Raccordo Montagnola-Momo
- 16 Collegamento Momo-Polsa
- 17 Malga vignola
- 18 Pista Momo
- 19 Raccordo Montagnola-Rosa del sole
- 20 Rosa del sole
- 21 Variante Rosa del sole
- 22 Collegamento Rosa del sole San Valentino
- 23 Collegamento S.Valentino-Polsa
- 24 San Valentino Nord
- 25 Postemon
- 26 Variante diretta postemon
- 27 Variante facile postemon
- 28 Mosee
- 29 Vallone
- 30 Intermedia vallon
- 31 Canalone
- 32 Costapelada (variante panoramica)
- 33 Panoramica
- **Pista non gestita**
- CS campo scuola

Servizi sulle piste:

- baita/rifugio/ristorante
- noleggio sci
- parcheggio
- pista slitte
- pattinaggio
- biglietterie skipass
- soccorso
- scuola sci



The Polsa, San Valentino and San Giacomo ski area is ideal for those who want to approach downhill skiing, snowboarding and cross-country skiing in total safety. Those taking their first steps on the snow can start on well-equipped school camps with qualified ski instructors. Experienced skiers will find descents where they can put their skills to the test. For cross-country skiers, the new San Giacomo Cross-Country Centre is perfect, as is the easy Polsa slope.

Modern ski lifts serve wide and safe slopes with scheduled snowmaking on 100% of the area.

For your ski holiday:

- Ski school for carving, telemark, free ride, Nordic skiing and snowboarding
- Equipment hire for all the sports
- Snow playgrounds
- Illuminated slopes at night
- Ice skating
- Toboggan runs

How to get there



Bolzano ▲

Riva del Garda

Nago

Torbole

Mori

▲ Dos Remit

▲ Monte Varagna

▲ Monte Altissimo
■ Rif. D. Chiesa

Castione

Besagno

▲ Monte Giovo

Brentonico

Crosano

Cazzano

Sornè

Corné

Prada

Saccone

Rif. Graziani ■

S. Giacomo

▲ Cime di Ventrar

S. Valentino

Polsa

▲ Monte Vignola

▲ Corno della Paura

Malcesine

M O N T E B A L D O

V A L L E D E L L ' A D I G E

A22
Ala-Avio

Sabbionara

Avio

▼ Verona



By train

The railway station is Rovereto, on the Bologna-Brenner line. A public bus service connects the Brentonico Plateau.

A taxi service is available from Rovereto train station or the bus terminal.

By car

Brennero A22 motorway, exit at Ala / Avio or Rovereto Sud / Lago di Garda Nord.

Follow the signs for Brentonico Plateau.

By plane

VERONA - Catullo di Villafranca airport. A shuttle bus service connects the airport with Verona Porta Nuova railway station from where it is possible to continue to Rovereto by train.

MILAN BERGAMO - Caravaggio airport at Orio al Serio. The ATB urban line connects the airport with the Bergamo railway station, from where it is possible to continue to Rovereto by train or Flixbus.

Brentonico Tourist Office

Via F. Filzi 37

Brentonico - TN

+39 0464 395149

brentonico@visitrovereto.it

APT Rovereto Vallagarina Monte Baldo Photo library, Municipality of Brentonico and Trentino Marketing. Photos by: Monica Bianchi, Silvano Bille, Veronica Bruschetti, Giampaolo Calzà, Nicola Camprostrini, Alberto Narduzzi, Silvia Passerini, Tommaso Prugnola, Elena Ravanelli, Roberto Simonetti, Mariano Tardivo

DD

0114
0115
0116
0117
0118
0119



ROVERETO
VALLAGARINA
MONTE BALDO



COMUNE DI
BRENTONICO



Parco
Naturale
Locale
Monte Baldo



Family
in TRENTINO



Cassa Rurale
Alto Garda Rovereto

    visitovereto.it